

COMPACT LOW-PRESSURE, HIGH-SENSITIVITY SWITCH

The **Model 745** fixed setting pressure switch is a diaphragm-operated model for low-pressure applications that require high-sensitivity and a compact form factor. It thrives in tough environments and withstands oil, fuel, water, dust, vibration and shock exposures. Standard electrical and pressure port configurations are listed below. Please consult the factory for custom configurations.



FEATURES

- Fixed pressure
- Diaphragm
- IP67 compliant
- Integral pressure port snubbing
- NEMA Type 4 rating

APPLICATIONS

- Off Road Equipment
- Industrial OEM Equipment
- Train Braking Systems
- Packaging Equipment
- Compactors
- Compressors
- Fuel Systems
- Pneumatic Systems

STANDARD SPECIFICATIONS

Pressure Connection	Electrical	Electrical Connection	Seal Materials	Materials	Temperature Range	Shipping Weight
1/4"-18 NPT	Snap-action Electrical Switch listed by UL and CSA	Lead Wire Connectors	Fluorosilicone	Hydraulic Module Housing 303 Stainless Steel	-40°F to +250°F	Approximately 3 oz.
1/8"-27 NPT		Single Pole Single Throw (SPST) or Double Throw (SPDT)			-40°C to +120°C	
9/16"-18 UNJF-3A	At 28 VDC: 7 Amps Resistive; 4 Amps Inductive; 2 1/2 Amps Lamp	Normally Open (NO), Normally Closed (NC)	Contact Factory	Electric Module Housing Polyphenylene Sulfide (PPS)	(Temperature Range Change with Diaphragm Material Selection)	
Options Available	Gold Contact Switches available for dry circuit applications	Other Options Available				

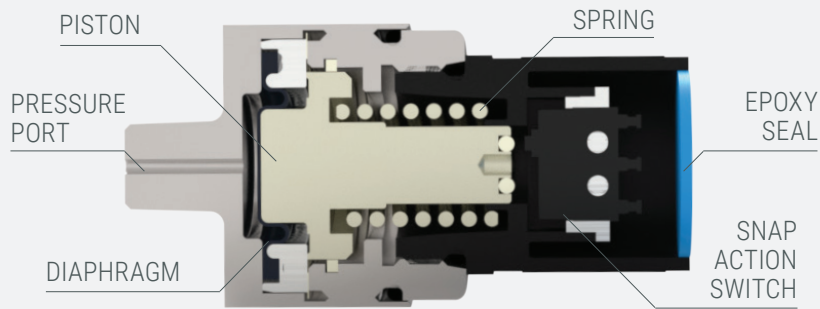
OPERATING PRESSURE DATA

Series	Range Indicator	Pressure Range	Tolerance on Set Pressure*	Dead Band*	Max System Pressure	Proof Pressure
745	3	7 – 160	Consult Factory	2 / 8	500	1000

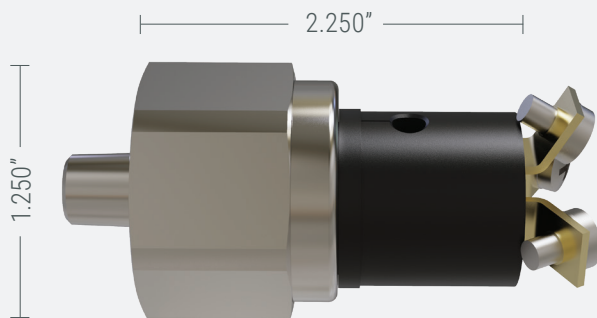
*Interpolate for intermediate pressures *Pressure in PSIG



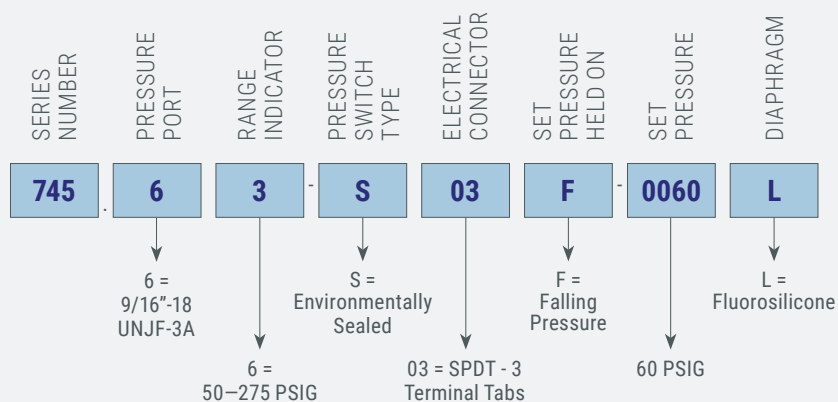
BASIC PRINCIPLES OF DESIGN



ENVELOPE DIMENSIONS



ORDERING PROCEDURE



*Insert available option number or letter as required

Example: 745.63-S03F-0060L

ORDERING SEQUENCE

SERIES

- 745 - Set pressures between 7-160 PSIG
- See Operating Pressure Data table

PRESSURE CONNECTION

- 6 - 9/16"-18 UNJF-3A (MS33656-E6)
- 2 - 1/4"-18 NPT (Male)
- Consult factory for metric and additional configurations

PRESSURE RANGE NUMBER

- See Operating Pressure Data table

TYPE

- S - Environmentally Sealed, Fixed Setting Pressure Switch

ELECTRICAL CONNECTION

- 03 - SPDT - 3 Terminal Tabs with #8-32 "SEMS" Screws
- 28 - SPDT - Weather Pack Connector with 4" lead wires (socket)
- 33 - SPDT - 3 #18 AWG lead wires 10" long
- 37 - SPDT - Weather Pack connector with 4" lead wires (pin)
- Consult factory for additional electrical configurations

SET PRESSURE TO BE HELD ON

- R - Rising Pressure
- F - Falling Pressure

SET PRESSURE

- Specify factory set pressure in 4-place PSIG (Example: 0060 for 60 PSIG)

DIAPHRAGM

- L - Fluorosilicone
- Consult factory for other options

SPECIAL ITEMS

- Wire, cable and cable length
- Pressure connection
- Seal materials
- Weather-proof connectors
- Gold electrical contacts for low current applications
- Consult rep or factory for special items and configurations